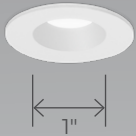


PETITE 1" DOWNLIGHT

ROUND RECESSED
REMODEL



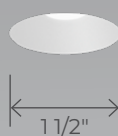
Flanged Trim



Flush Flanged Trim



Trimless



Glow Ring



Glow Ring 1"



The Petite 1" Round Recessed Remodel extends the Petite Collection to remodel applications where above-ceiling access is limited. Sharing the collection's compact 1" aperture, streamlined aesthetic, and certain trim options, the luminaire is offered in a fixed configuration with a remote driver and is designed for installation and maintenance from below the ceiling.

Beam Angles



Light Source

Static White

Performance

LUMEN OUTPUT ¹	WATTS	EFFICACY
605 lm	7 W	86 lm/W

¹Lumen packages are assuming 3500K, 90+ CRI, 45° beam, trimless, white baffle, and with no lens.

Ceiling Types



Petite Brochure

Petite Family (Refer to other spec sheets) Downlight



Adjustable



Recessed



Wall Wash

Multi-aperture



Adjustable



Recessed



Wall Wash

Cylinder



Pendant



Surface

PETITE 1" DOWNLIGHT

ROUND RECESSED
REMODEL



Project: _____

Type: _____

1 - Light

LUMINAIRE ID	TRIM STYLE	BAFFLE FINISH Specify NA for Glow ring	TRIM FLANGE FINISH Specify NA for Glow ring and Trimless	LENS
PETIRRM D				
PETIRRM D - Petite 1" Round Recessed Remodel	TRM - Flanged trim TRMP - Flush flanged trim drywall mudplate TRMW - Flush flanged trim millwork <hr/> TLMP - Trimless drywall mudplate <hr/> GLR - Glow ring GLRI - Glow ring 1"	FTMW - Matte white FTMB - Matte black FSPC - Satin silver FSSPC - Matte silver FCHP - Champagne FDBZ - Dark bronze FPF - Primer finish CF# - Custom finish, specify RAL# NA - Not applicable	FTMW - Matte white FTMB - Matte black FSPC - Satin silver FSSPC - Matte silver FCHP - Champagne FDBZ - Dark bronze FPF - Primer finish CF# - Custom finish, specify RAL# NA - Not applicable	At baffle SDL ¹ - Soft diffused lens, Solite NOL - No lens ¹ Only available with 35° and 45°.

LIGHT SOURCE	BEAM	COLOR QUALITY	CRI	COLOR TEMPERATURE
SW				
SW - Static white	35DEG - 35° Narrow flood 45DEG ² - 45° Flood 60DEG ³ - 60° Wide flood ² Not available with GLRI trim option. ³ Only available with TLMP trim option.	2STP - 2 Step MacAdam Ellipse 3STP - 3 Step MacAdam Ellipse	80CRI - 80+ CRI 90CRI - 90+ CRI 95CRI - 95+ CRI	22K ⁴ - 2200K 24K ⁴ - 2400K 27K - 2700K 30K - 3000K 35K - 3500K 40K - 4000K 50K ⁴ - 5000K ⁴ Not available with 95+ CRI.

2 - Remote Driver Box

REMOTE DRIVER ⁵	LUMINAIRE QUANTITY ⁶	LUMINAIRE ID	VOLTAGE	WATTAGE	DIMMING
		PETIRRM D		7W	
RDB# - Remote driver box ⁵ Specify an RDB number (#) for each required remote driver box.	1X - 1 luminaire 2X - 2 luminaires 3X - 3 luminaires ⁶ Each luminaire requires its own driver. Specify the number of luminaires per driver box.	PETIRRM D - Petite 1" Round Recessed Remodel	120V - 120V 277V - 277V UNV - 120V-277V 347V ⁷ - 347V ⁷ Available with RD1 driver only. Please consult factory.	7W - 7 W output, up to 605 lm	RD1 - 1% 0-10V RELV ⁸ - ELV 120V RTRI ⁸ - TRIAC 120V RLDE1 ⁹ - Lutron Hi-lume 1% Eco RDA ⁹ - DALI RELD1 - eldoLED 1% ECOdrive 0-10V RELD0 - eldoLED 0.1% SOLOdrive 0-10V RPEQ0 ⁹ - Lutron Hi-lume Premier 0.1% EcoSystem +EB ^{10,11} - Emergency battery ⁸ Available with 120V only. ⁹ On-site commissioning is required. ¹⁰ To specify, add +EB to the selected dimming option, e.g. RD1+EB. ¹¹ Only available with 1X luminaire option.

EXAMPLE CODE:	LIGHT	PETIRRM-D-TRM-FTMW-FTMW-SDL-SW-35DEG-2STP-90CRI-35K	REMOTE DRIVER	RDB1-2X-PETIRRM-D-120V-7W-RD1 RDB2-1X-PETIRRM-D-120V-7W-RD1
----------------------	--------------	---	----------------------	--

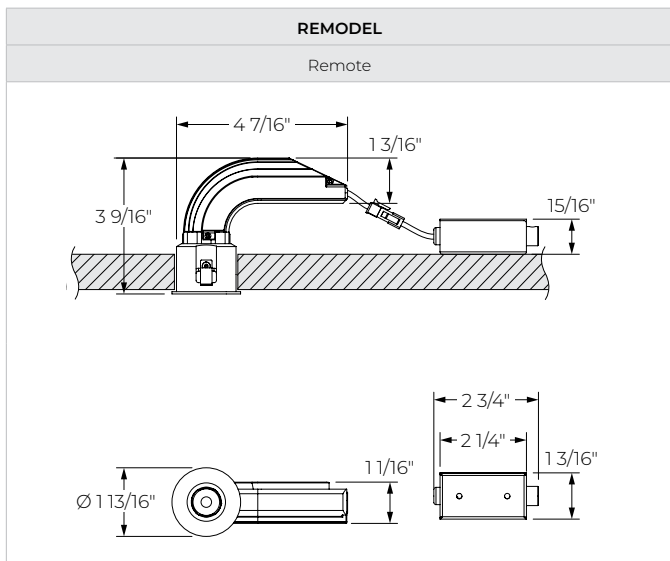


PETITE 1" DOWNLIGHT

ROUND RECESSED
REMODEL

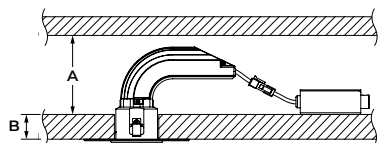


Dimensions



- A remote driver box is provided.
- Shown with TRM trim style option.

PLENUM CLEARANCE & CEILING THICKNESS

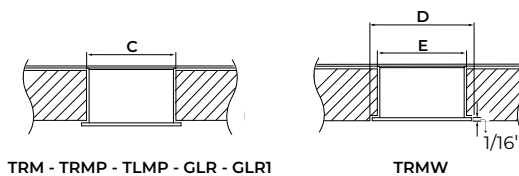


PLENUM CLEARANCE HEIGHT	
A	3"

CEILING THICKNESS	
B	1/2" to 1 1/4"

* Clearance between sides of luminaire and parts of building must be 1/2" minimum; clearance to insulating materials to be 3" minimum.

CUT-OUT DIMENSIONS



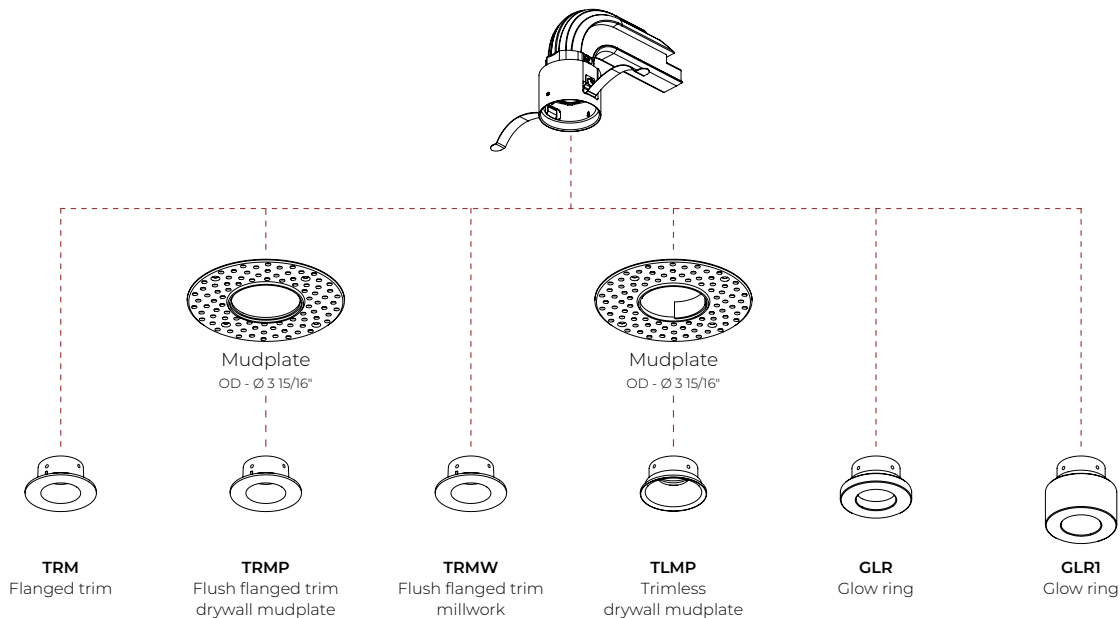
CUT-OUT DIMENSIONS				
		Drywall	Acoustic tile	Millwork
C	TRM	Ø 1 11/16"		N/A
	TRMP / TLMP	Ø 1 11/16"	N/A	
	GLR / GLR1	Ø 1 11/16"		
D	TRMW	N/A		Ø 1 13/16"
E		N/A		Ø 1 11/16" with 1/16" lip

PETITE 1" DOWNLIGHT

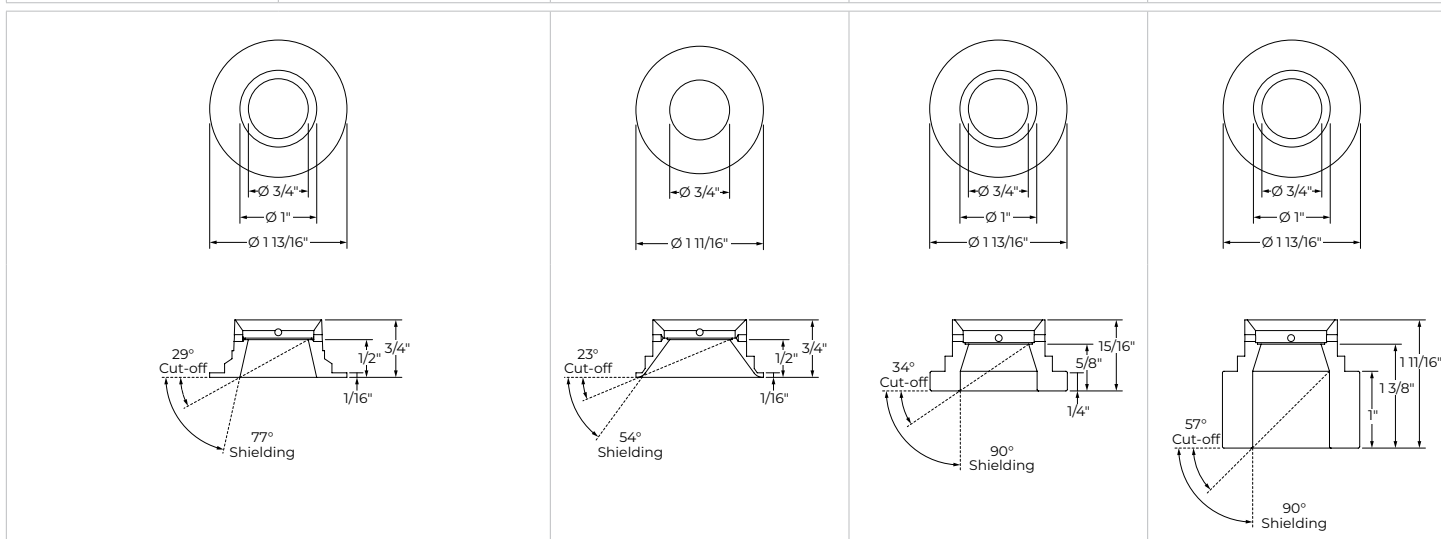
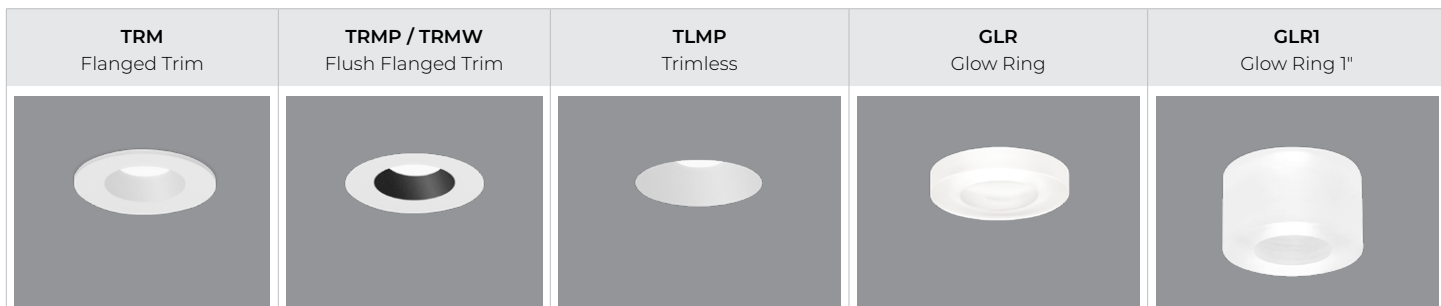
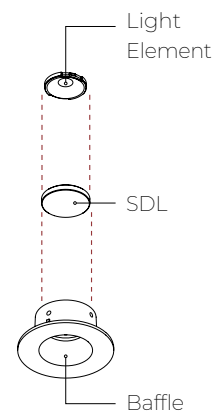
ROUND RECESSED
REMODEL



Trim Style



Lens

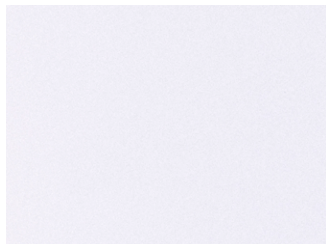


PETITE 1" DOWNLIGHT

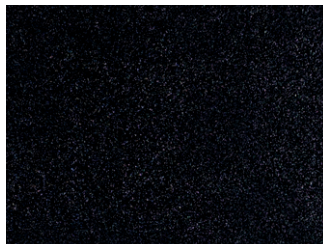
ROUND RECESSED
REMODEL



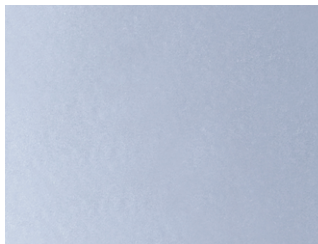
Finishes



FTMW - Matte white



FTMB - Matte black



FSPC - Satin silver



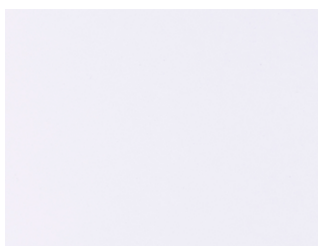
FSSPC - Matte silver



FCHP - Champagne



FDBZ - Dark bronze



FPF - Primer finish

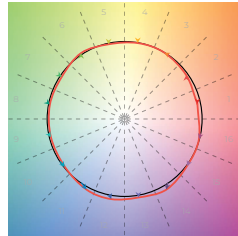
PETITE 1" DOWNLIGHT

ROUND RECESSED REMODEL



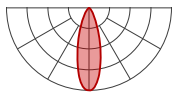
Color Quality

COLOR QUALITY - 3500K	
TM-30 R _r	91
TM-30 R _g	100
CRI	90+
R9	> 50



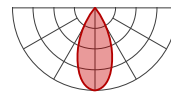
Photometrics

Values calculated based on 3500K, 90+ CRI, and with no lens. The light distribution will vary depending on trim style and baffle finish.



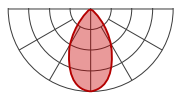
35DEG - 35° Narrow flood

WATTAGE		7 W	
Trim style	Baffle finish	lm	lm/W
Trim	White	480	69
	Black, Champagne, Dark bronze	392	56
	Satin silver, Matte silver	458	65
Trimless	White	538	77
	Black, Champagne, Dark bronze	495	71
	Satin silver, Matte silver	534	76
Glow ring		486	69
Glow ring 1"		437	62



45DEG - 45° Flood

WATTAGE		7 W	
Trim style	Baffle finish	lm	lm/W
Trim	White	509	73
	Black, Champagne, Dark bronze	412	59
	Satin silver, Matte silver	488	70
Trimless	White	605	86
	Black, Champagne, Dark bronze	522	75
	Satin silver, Matte silver	576	82
Glow ring		490	70



60DEG - 60° Wide flood

WATTAGE		7 W	
Trim style	Baffle finish	lm	lm/W
Trimless	White	381	54
	Black, Champagne, Dark bronze	296	42
	Satin silver, Matte silver	339	48

MULTIPLIERS

Please follow the multiplier tables to ensure correct lumen value. CCT, CRI, and lensing will change the lumen value.

CCT		CRI		LENS	
2200K	0.80	80+ CRI	1	SDL - Soft diffused lens, Solite	0.91
2400K	0.87	90+ CRI	1	NOL - No lens	1
2700K	0.94	95+ CRI	0.77		
3000K	0.98				
3500K	1				
4000K	1.05				
5000K	1.05				



PETITE 1" DOWNLIGHT

ROUND RECESSED
REMODEL



Technical Specifications

OPTIC

The CircaFlex™ Optic uses advanced beam-splitting technology to allow light to follow an intended optical path with maximal precision, minimal spread, and even distribution.

LIGHT SOURCE

Compact COB (Chip-On-Board) LED module, available in 2200K, 2400K, 2700K, 3000K, 3500K, 4000K, and 5000K with a choice of 80+ CRI, 90+ CRI, or 95+ CRI, with elevated R9 value for 90+ CRI and above. Color consistency is maintained to within 2 SDCM. All LEDs have been tested in accordance with IESNA LM-80-08 and the results have shown L80 lumen maintenance greater than 60,000 hours. Absolute product photometry is measured and presented in accordance with IESNA LM-79, unless otherwise indicated.

ELECTRICAL

Unless otherwise specified, dimming down to 1%. At maximum driver load: efficiency>84%, PF>0.9, THD<20%.

ELV and TRIAC dimming performance (including minimum dimming percentage) subject to dimmer selection.

Remote: 0-10V, ELV, TRIAC, Lutron Hi-lume 1% Eco, DALI, eldoLED 1% ECOdrive 0-10V, eldoLED 0.1% SOLOdrive 0-10V, Lutron Hi-lume Premier 0.1% EcoSystem

Emergency battery option: Remotely-installed, long-life, high-temperature, maintenance-free, Bodine Lithium-Ion battery pack with self-test functionality, test switch and charge indicator. IOTA and Fulham options available upon request. Minimum of 90 minutes operation, and recharge time of 24 hours. For fixtures less than 10 W, the battery provides 6 W of emergency light output. For fixtures 10 W and over, the battery provides 10 W.

PoE

Depending on the PoE manufacturer selected, Lumenwerx will install the node in factory as either integral to the luminaire, or as a remote module. Factory programming of the PoE node may or may not enable the following functionalities: lumen package, DUO (tunable white), QUADRO (RGBW), emergency battery backup, and sensor integration. These must be addressed and evaluated on a case-by-case basis.

FINISH

Standard powder-coat paint available in matte white, matte black, satin silver, matte silver, champagne, dark bronze, and primer finish. Custom colors also available (provide RAL #). For the primer finish option, fixture must be turned off and the lens masked before applying paint.

CONSTRUCTION

Baffle: Die-cast aluminum

Glow ring: Acrylic

Heat sink: Die-cast aluminum

WEIGHT

0.41 lbs - 0.19 kg

LENS



Soft diffused lens, Solite

ENVIRONMENT

Ambient temperature at fixture location shall be within 0°C/32°F - 25°C/77°F, indoor dry or damp as well as outdoor damp use (canopies or marquees)

CERTIFICATION

ETL: Rated for indoor dry/damp locations. Conforms to UL Standard 1598 and certified to CAN/CSA Standard C22.2 No. 250.0.

WARRANTY

Lumenwerx provides a five-year limited warranty on electrical and mechanical performance of the luminaires, including the LED boards, drivers, and auxiliary electronics. Lumenwerx will repair or replace defective luminaires or components at our discretion, provided they have been installed and operated in accordance with our specifications. Other limitations apply, please refer to the full warranty on our website.